



Case Studies Completed or Under Way



geothermalinternational

Alexandra Park School, London

- System:
 - Vertical, Closed Loop
- Size:
 - 120kW Cooling
- Collector type:
 - 20 boreholes
 - Depth 100m
- Completed:
 - 2004



geothermalinternational

Gloucester Police HQ

- System:
 - Vertical, Closed Loop
- Size:
 - 860kW Cooling
 - 640kW Heating
- Collector type:
 - 150 boreholes
 - Depth 98m
- Completed:
 - 2005



geothermalinternational

Solihull Inclusive Learning Centre

- System:
 - Horizontal, Closed Loop
- Size:
 - 350kW Heating
- Collector type:
 - 54 No Trenches
 - 100m Long
- Completed:
 - 2006



geothermalinternational

Chelsea Building Society HQ

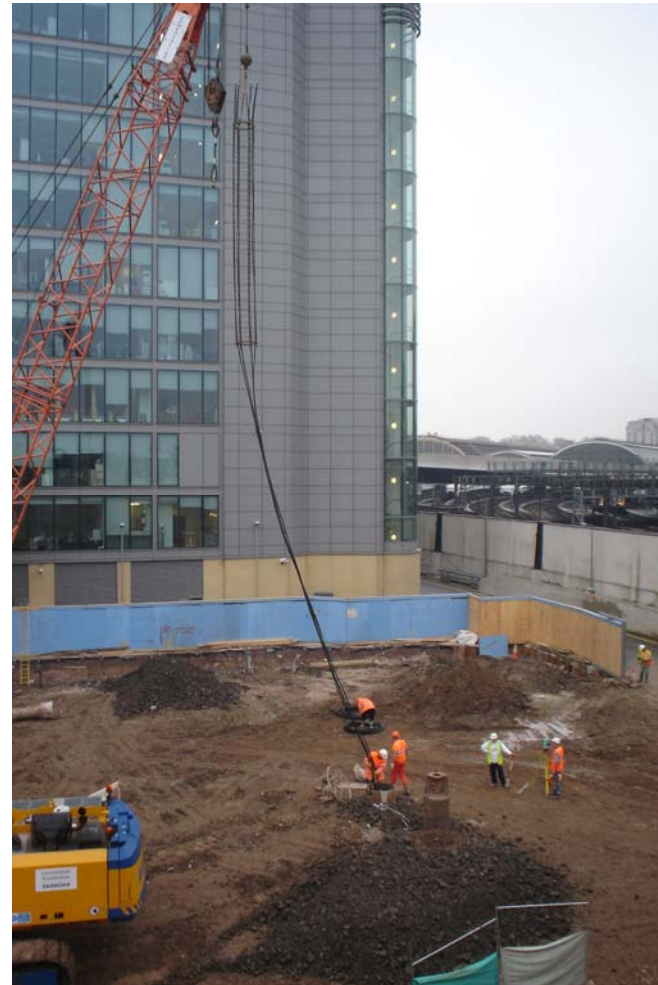
- System:
 - Vertical, Closed Loop
- Size:
 - 490+380kW Cooling
 - 190+290kW Heating
- Collector type:
 - 108 boreholes
 - Depth 98m
- Completed:
 - 2006



geothermalinternational

Paddington Building 3, London

- System:
 - Energy Piles©
- Size:
 - 210kW Heating
 - 85kW Cooling
- Collector type:
 - 54 Piles
 - Depth 25m
- To be Completed:
 - 2006



North Kent Police PFI

- System:
 - Energy Piles, Closed Loop & Dry Cooler
- Size:
 - 550kW Heating
 - 1,350kW Cooling
- Collector type:
 - 250 Piles to 23m
 - 80 Bores to 100m
- Completed:
 - On Site Now
 - Due 2007



geothermalinternational



Head Office:

Spencer Court

143 Albany Road

Coventry, CV5 6ND

Phone: +44 (0) 24 7667 3131

Fax: +44 (0) 24 7667 9999

info@geoheat.co.uk

Scottish Office:

4 Imex Centre

Broadleys Business Park

Craigleath Road

Stirling, FK7 7LQ

Phone: +44 (0) 1786 473666

Fax: +44 (0) 1786 475599

geothermal@geoheat.co.uk

www.geoheat.co.uk